



Priority Spokane serves as a catalyst and convener in Spokane County for data-driven and focused improvements in economic vitality, education, the environment, health, and community safety.

OUR MISSION

Priority Spokane is an endeavor to create a vibrant future for Spokane County by implementing community-defined goals. It is through collaborative and focused efforts on improvements to economic vitality, education, the environment, health and community safety that Spokane County will be a flourishing community for all who live and work in Spokane County.

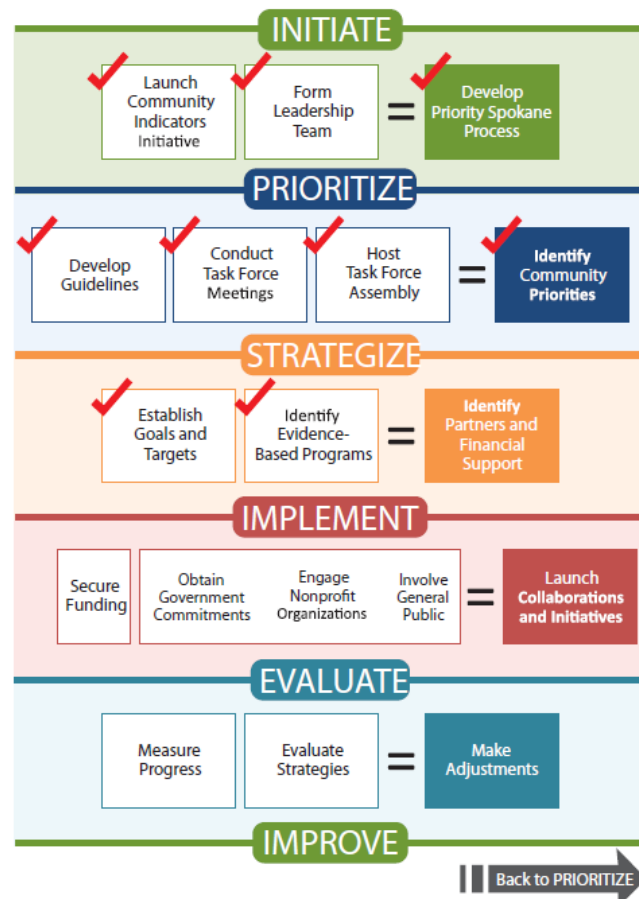
OUR HISTORY

In 2004, Eastern Washington University’s (EWU) Institute for Policy and Economic Analysis commenced the Community Indicators Initiative (CII). This initiative involved the collection of data - or indicators - to assess the state of the Spokane community in terms of economic vitality, education, health, environment and numerous other factors.

A group of community leaders involved in the CII process recognized the value of the indicators for identifying priority community problems and for measuring change on these issues over time. These leaders represented local government, businesses, nonprofit organizations and local funders. With the vision to prioritize community action to measurably improve the community, these leaders launched Priority Spokane.

OUR SUCCESS

In 2006 the Spokane Public Schools’ graduation rate was less than 60 percent. Through Priority Spokane’s initiative and process, by 2013 it had jumped to nearly 80 percent. As a result Priority Spokane received the 2014 RWJF Culture of Health Prize.



CONTACT www.PrioritySpokane.org , E-mail PrioritySpokane@outlook.com , (509)499-0536